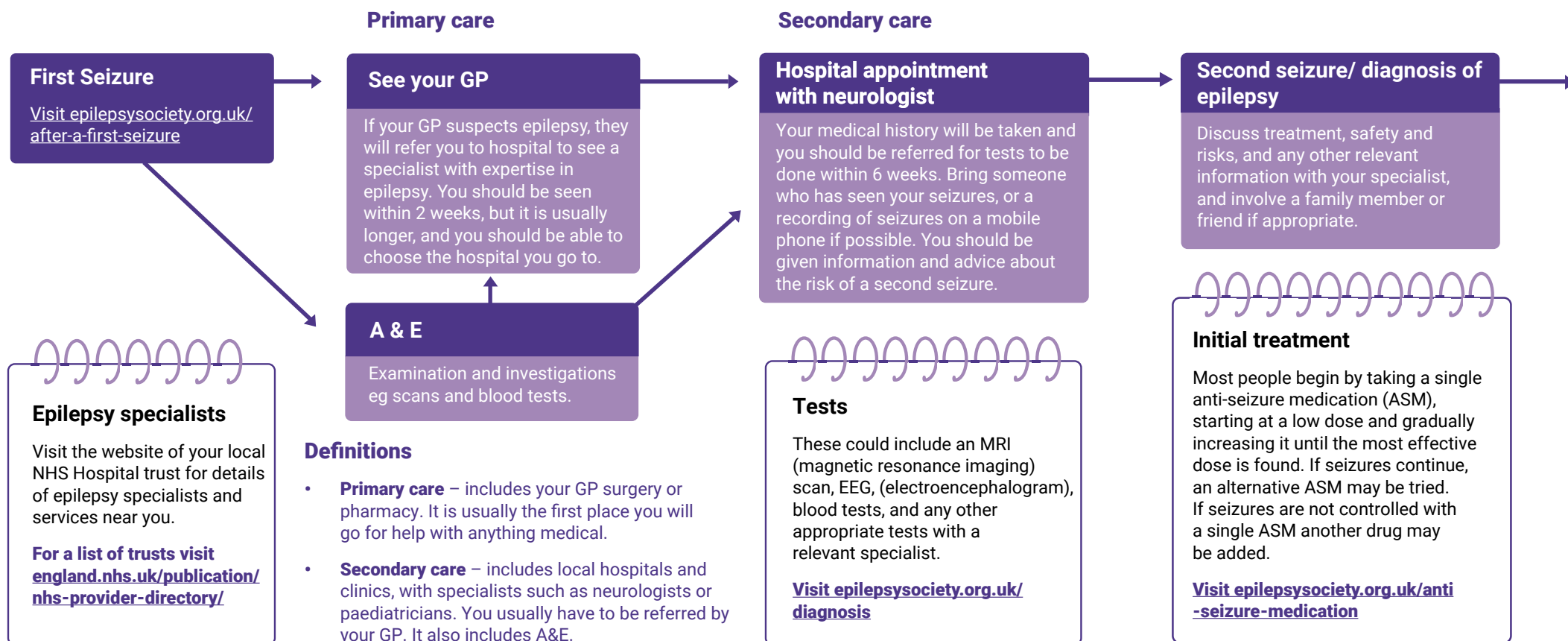


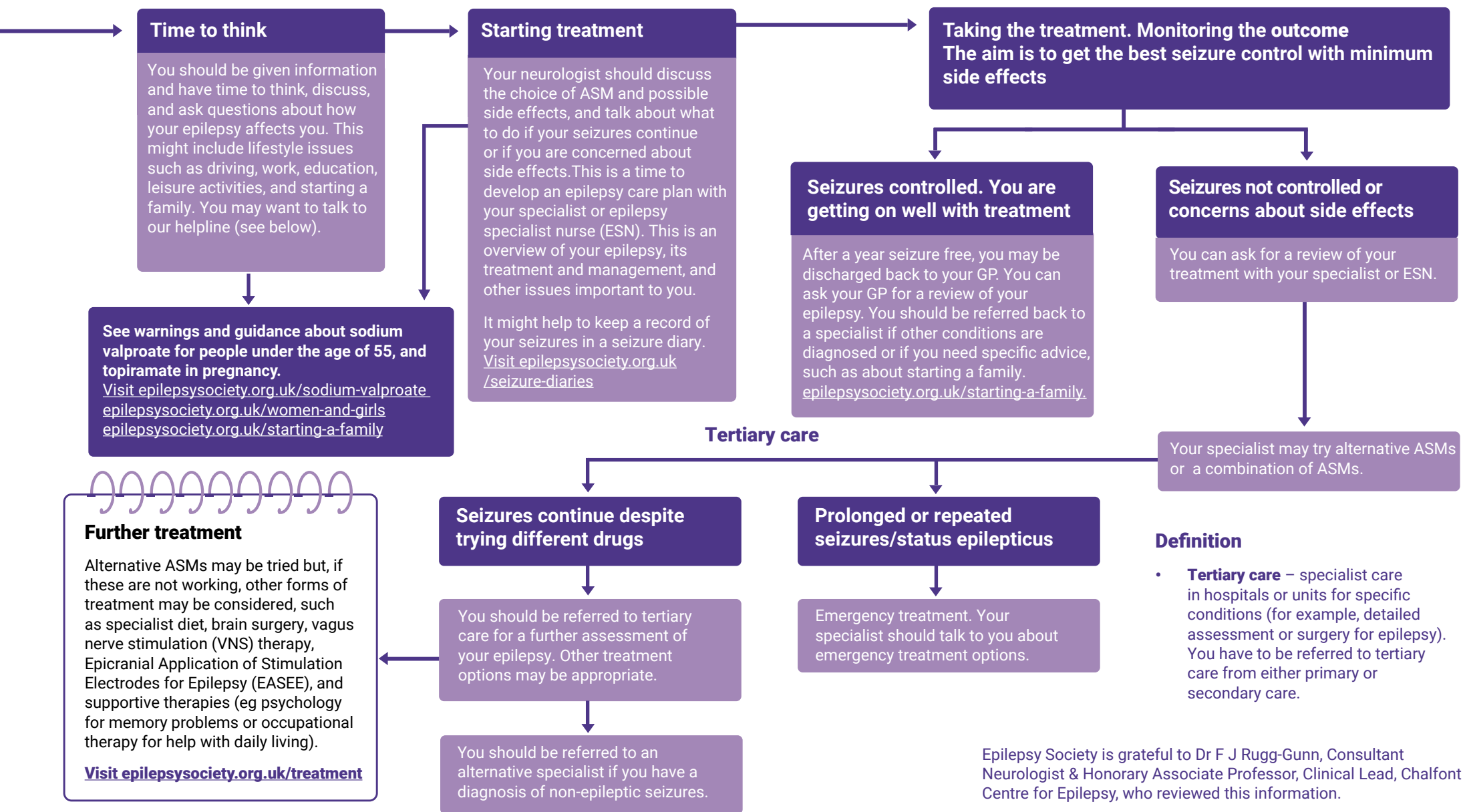
Epilepsy care pathway



Epilepsy care: your rights – “You have a right” indicates things you are entitled to by law. “You should” indicates things that are a recommendation. For more, visit epilepsysociety.org.uk/about-epilepsy/epilepsy-care-your-rights

1. After a first seizure, you should see a specialist within two weeks.
2. You have a right to choose who provides your care.
3. If your epilepsy is difficult to diagnose or manage, you should be referred to a tertiary service for specialist care and treatment.
4. You have a right to access NHS services and to treatment options that are appropriate for you.
5. You have the right to be involved in your health and care and to be given enough information to make informed decisions.
6. You should have a care plan agreed with your healthcare professionals.
7. You have a right to access your own health records.
8. You have a right to NHS dental care.
9. You are entitled to free prescriptions.
10. You, and your carer, are entitled to ask for a home assessment or care needs assessment. You may be entitled to welfare benefits.
11. You have a right to be treated with dignity and respect and to not be discriminated against.
12. You have a right to complain about NHS services or treatment.
13. You have responsibilities as well as rights.





See warnings and guidance about sodium valproate for people under the age of 55, and topiramate in pregnancy.
Visit epilepsysociety.org.uk/sodium-valproate
epilepsysociety.org.uk/women-and-girls
epilepsysociety.org.uk/starting-a-family

Further treatment
Alternative ASMs may be tried but, if these are not working, other forms of treatment may be considered, such as specialist diet, brain surgery, vagus nerve stimulation (VNS) therapy, Epidural Application of Stimulation Electrodes for Epilepsy (EASEE), and supportive therapies (eg psychology for memory problems or occupational therapy for help with daily living).
Visit epilepsysociety.org.uk/treatment

Every effort is made to ensure that all information is correct at the time of publishing. Please note that information is intended for a UK audience. This information is not a substitute for advice from your own doctors. Epilepsy Society is not responsible for any actions taken as a result of using this information.

For more information visit epilepsysociety.org.uk/about-epilepsy/epilepsy-care-your-rights
For the full NICE guideline visit nice.org.uk/guidance/ng217

Epilepsy Society
Chesham Lane,
Chalfont St Peter,
Buckinghamshire
SL9 0RJ

Epilepsy Society is grateful to Dr F J Rugg-Gunn, Consultant Neurologist & Honorary Associate Professor, Clinical Lead, Chalfont Centre for Epilepsy, who reviewed this information.

For a printed copy of this information contact our helpline.

Helpline 0300 102 0024
epilepsysociety.org.uk/helpline
Confidential, information, and emotional support.
[Visit epilepsysociety.org.uk/helpline for opening hours.](http://epilepsysociety.org.uk/helpline)